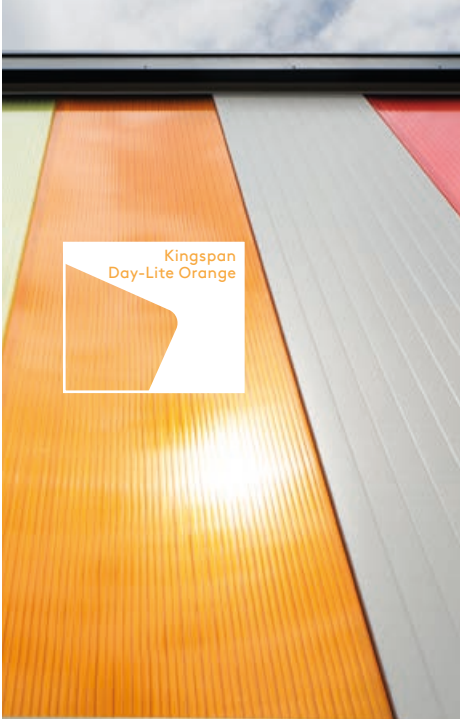


Insulated Panels

UK & Ireland

Colours & Coatings

External Colour & Coating Ranges

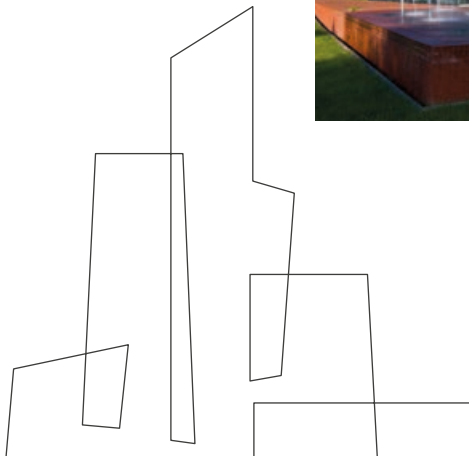


Kingspan Colour & Coatings

Kingspan provides a large selection of external finishes and colours for its Standing Seam System, Insulated Roof & Wall Panels and Fabrications, Safety & Lighting Solutions, allowing building owners' and architects the ultimate flexibility in designing their building.

With a wide variety of finishes including metallic, matt and solid, Kingspan's offer is suitable for the following building types:

- Community & Amenity
- Education
- Health
- Hotels & Leisure
- Industrial
- Infrastructure
- Offices
- Private Housing
- Retail
- Social Housing
- Utilities



Kingspan Guarantees



In recognition of the many different demands that are placed on construction professionals today, Kingspan Insulated Panels offers comprehensive warranties on not just one aspect of its products, but all of the key performance areas.

Kingspan Warranties provide market-leading protection that covers the coating, durability, structural, fire and thermal performance of a product in a single, unique package.

Kingspan Insulated Panels sources its colour coated metal from several world class coatings suppliers and the Warranty includes a coatings protection against corrosion, chemical attack, ultra-violet radiation, humidity and abrasion for up to 40 years (in nominated geographic zones), so the building owner can be sure that the building will continue to look good year on year. The thermal efficiency and structural performance of the panels are warranted for periods of up to 25 years.

The below table refers to warranty periods for the United Kingdom:

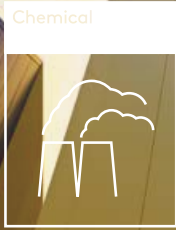
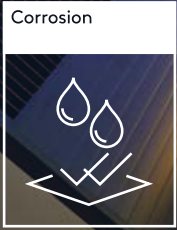
	Inland Roof	Inland Wall	Coastal Roof**	Coastal Wall**
Kingspan XL Forté	40 years	40 years	30 years	30 years
Kingspan XL Forté*	30 years	40 years	25 years	30 years
Kingspan Spectrum Solid	30 years	30 years	25 years	25 years
Kingspan Spectrum Metallic	30 years	30 years	25 years	25 years
Kingspan Altaris (ALL) 2L	N/A	30 years	N/A	N/A
Kingspan Altaris (ALL) 3L	N/A	40 years	N/A	20 years
Kingspan Altaris (ALL) 4L	N/A	40 years	N/A	20 years
Membranes	A 15 year warranty is available as standard. For warranties in excess of 15 years, please contact Kingspan Technical Services.			

For warranty periods for Ireland, please contact our Technical Services Department on +353 (0) 42 96 98529.

* Please note the reduction in the roof warranty that is applicable to specific colours within this range.

** Coastal refers to buildings within 1 km of the coast.

Extra reassurance where you need it



Kingspan offers the following range of coating systems suitable for external applications:

- Kingspan XL Forté;
- Kingspan Spectrum;
- Kingspan Spectrum Metallic;
- Kingspan Altaris

Kingspan coating systems offer many important advantages over those provided by any other coatings on the market:

Excellent corrosion resistance

Kingspan coatings are best in class for corrosion resistance. They use innovative metal alloy substrates, which provide maximum resistance to corrosion on scratches and on cut edges.

Advanced colour stability and UV resistance

Kingspan coloured coatings use state-of-the-art technology with improved UV resistance that provides better gloss retention and weather resistance.

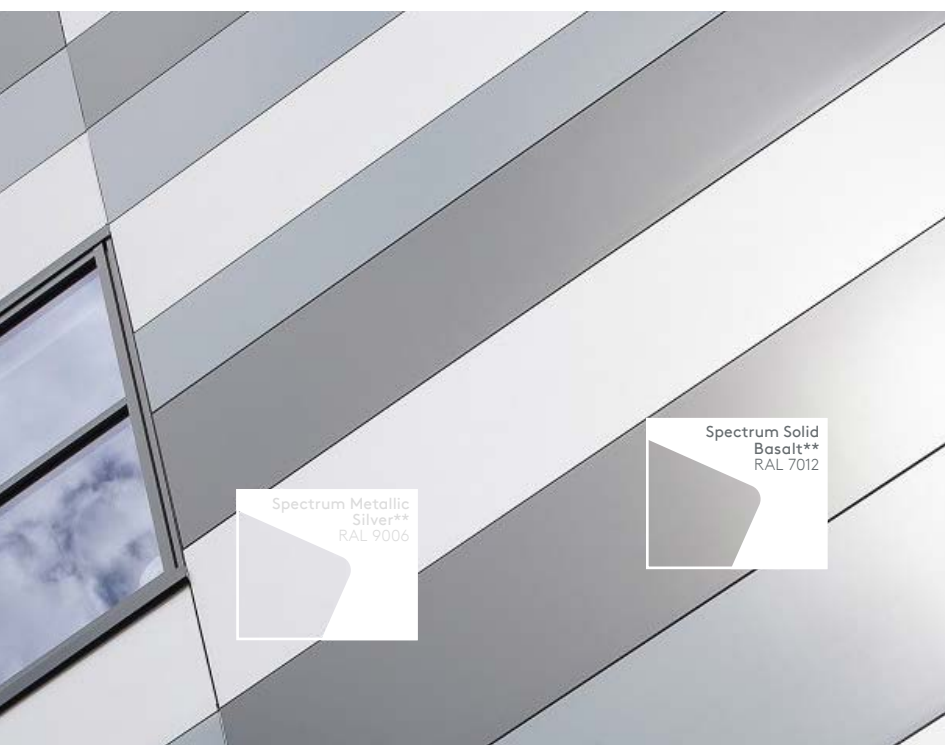
Environmentally safe

Our coloured coating systems have been designed in accordance with Kingspan's sustainable development policy. They are phthalate-free, contain no heavy metals and are fully recyclable. Phthalate-free chemistry contributes to maintaining a safe and healthy environment.

Maintenance-free, saving time, trouble and cost

Kingspan coatings do not require any special maintenance regime and their performance will not deteriorate during their lifetime.

Kingspan Colours



Kingspan XL Forté

A range of world class protective PVC coatings with a leathergrain effect that is available in inspiring colours and provides a barrier against the elements.



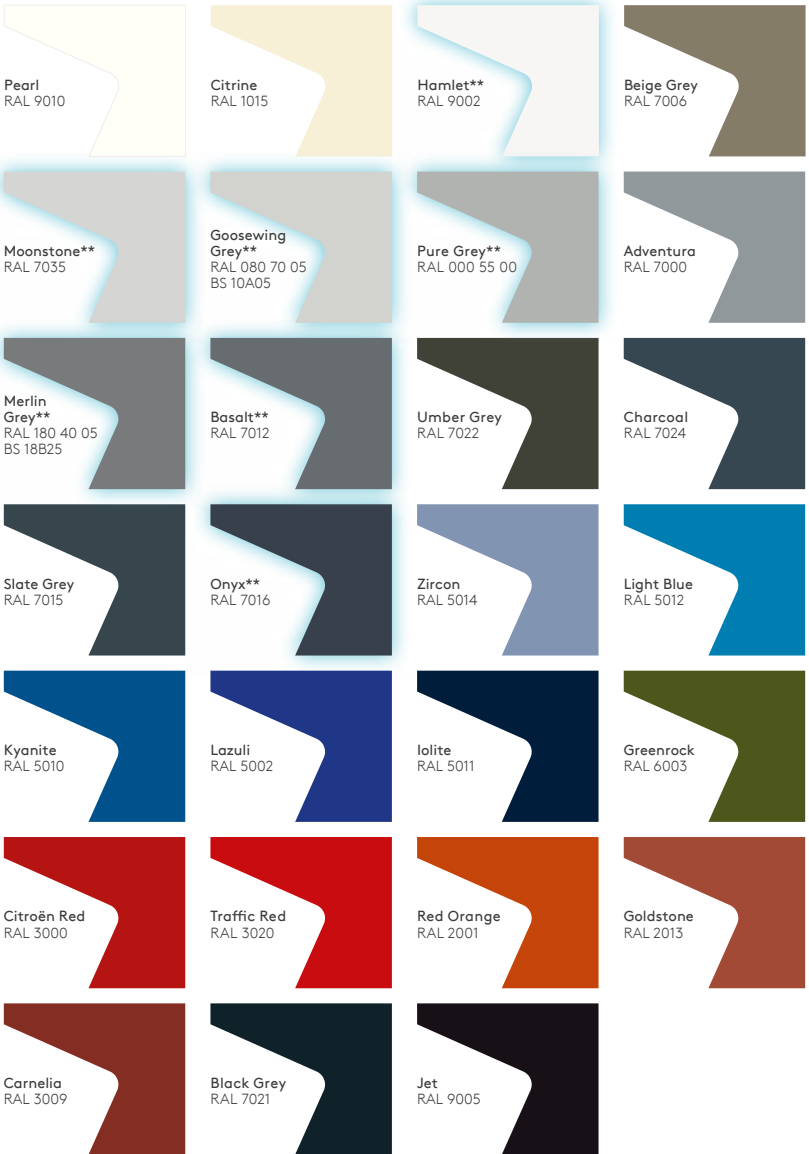
For stock levels, minimum order quantities and/or lead times, contact the Kingspan Quotations Department. The printed colours are as accurate as possible but are for guidance purposes only. British Standard (BS) or RAL reference numbers represent the nearest colours and are not exact matches to our Kingspan coatings. Please ensure that you request a swatch sample from the Kingspan Marketing Department to view accurate colour and texture prior to specification.

* Please note the guarantee periods for these colours are as for XL Forté* - see table under 'Kingspan Guarantees'.

Kingspan Spectrum

A range of proven smooth polyurethane coatings that delivers aesthetic brilliance and guaranteed performance in a variety of applications.

Kingspan Spectrum Solid



QuadCore[™]LEC
LOWER EMBODIED CARBON SOLUTIONS

** Also available for our Lower Embodied Carbon products. Other colour options are available depending on order size and availability. Please contact us for more information.

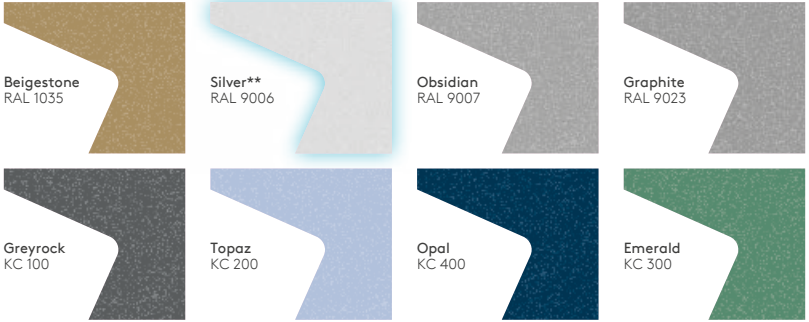
For stock levels, minimum order quantities and/or lead times, contact the Kingspan Quotations Department. The printed colours are as accurate as possible but are for guidance purposes only. British Standard (BS) or RAL reference numbers represent the nearest colours and are not exact matches to our Kingspan coatings. Please ensure that you request a swatch sample from the Kingspan Marketing Department to view accurate colour and texture prior to specification.

* Please note the guarantee periods for these colours are as for XL Forté* - see table under 'Kingspan Guarantees'.

Kingspan Spectrum

A range of proven smooth polyurethane coatings that delivers aesthetic brilliance and guaranteed performance in a variety of applications.

Kingspan Spectrum Metallic



** Also available for our Lower Embodied Carbon products. Other colour options are available depending on order size and availability. Please contact us for more information.

For stock levels, minimum order quantities and/or lead times, contact the Kingspan Quotations Department. The printed colours are as accurate as possible but are for guidance purposes only. British Standard (BS) or RAL reference numbers represent the nearest colours and are not exact matches to our Kingspan coatings. Please ensure that you request a swatch sample from the Kingspan Marketing Department to view accurate colour and texture prior to specification.

* Please note the guarantee periods for these colours are as for XL Forté* - see table under 'Kingspan Guarantees'.

Kingspan Altaris

Technically advanced PVDF multi-layer (up to 4 layers of paint) coatings featuring colour purity, strength, resistance and stability. This range provides unparalleled protection against environmental weathering and is available with a high gloss finish.

Kingspan Altaris Solid

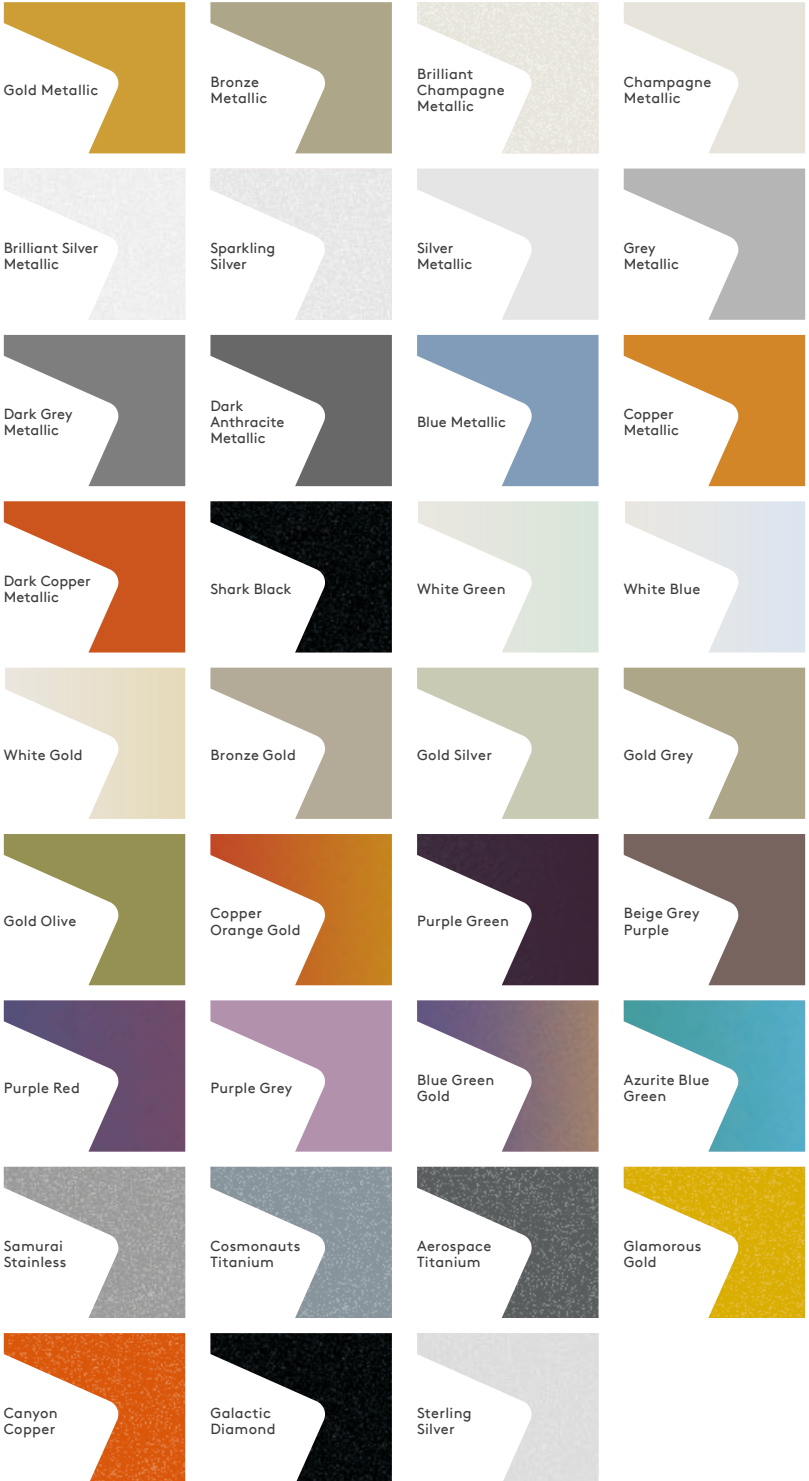


For stock levels, minimum order quantities and/or lead times, contact the Kingspan Quotations Department. The printed colours are as accurate as possible but are for guidance purposes only. British Standard (BS) or RAL reference numbers represent the nearest colours and are not exact matches to our Kingspan coatings. Please ensure that you request a swatch sample from the Kingspan Marketing Department to view accurate colour and texture prior to specification.

* Please note the guarantee periods for these colours are as for XL Forté* - see table under 'Kingspan Guarantees'.

Kingspan Altaris

Kingspan Altaris Metallic

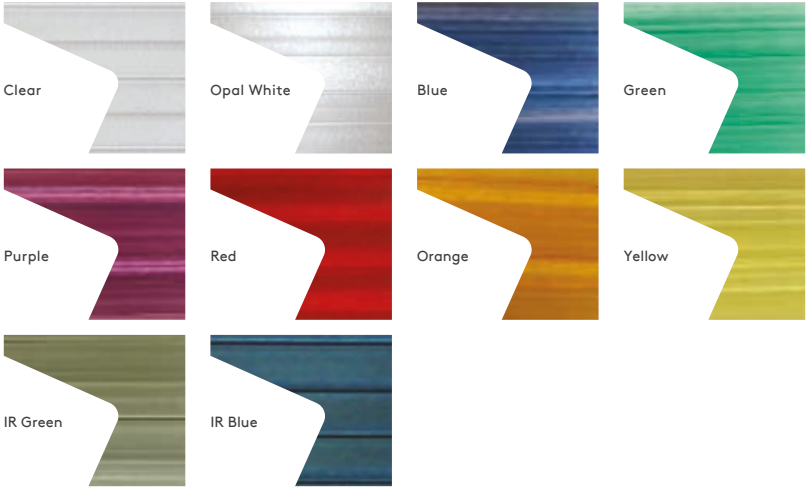


For stock levels, minimum order quantities and/or lead times, contact the Kingspan Quotations Department. The printed colours are as accurate as possible but are for guidance purposes only. British Standard (BS) or RAL reference numbers represent the nearest colours and are not exact matches to our Kingspan coatings. Please ensure that you request a swatch sample from the Kingspan Marketing Department to view accurate colour and texture prior to specification.

* Please note the guarantee periods for these colours are as for XL Forté* - see table under 'Kingspan Guarantees'.

Kingspan Day-Lite

A range of colourful translucent multi-wall polycarbonate for roof and wall applications, with UV protected layers that allow high levels of natural light to pass through.



Infra-Red (IR) Absorbing Lights

These two colours absorb greater levels of infra-red light which reduces solar gain. This can allow for greater control of ambient temperature within the building providing a possible reduction in HVAC usage.

Anti-glare

Anti-glare is a treatment which is part of the extrusion process of the polycarbonate sheet – this option is available on clear and opal white.

Membranes

High performance polyvinyl chloride (PVC) and thermoplastic elastomer (TPE) single-ply membranes specifically designed for roof applications and fabrications.



UK

Kingspan Limited

Greenfield Business Park No.2
Greenfield | Holywell
Flintshire | North Wales
CH8 7GJ
T: +44 (0) 1352 716100
info@kingspanpanels.com
www.kingspanpanels.co.uk

Ireland

Kingspan Limited

Carrickmacross Road
Kingscourt | Co. Cavan
A82 E897
Tel: +353 (0) 42 96 98500
info.ire@kingspanpanels.com
www.kingspanpanels.ie

Please scan the QR code below for the most up to date version of this document.



For the product offering in other markets please contact your local sales representative or visit www.kingspanpanels.com

Care has been taken to ensure that the contents of this publication are accurate, but Kingspan Limited and its subsidiary companies do not accept responsibility for errors or for information that is found to be misleading. Suggestions for, or description of, the end use or application of products or methods of working are for information only and Kingspan Limited and its subsidiaries accept no liability in respect thereof.

03/2024

