



ALCOTEX

**ARCHITECTURAL
FINISHES GUIDE**



At Alcotex, helping our customers meet or exceed their architectural vision is our foremost priority.

Alcotex strikes the perfect balance of providing lightweight, durable, cost-effective, easy to fabricate and maintenance-free material with an equally impressive range of colors and finishes. We look forward to helping your visions become realities.



COLOR VARIETY



LIGHTWEIGHT PANELS



ENVIRONMENTALLY FRIENDLY



DESIGN FLEXIBILITY

COATING SPECIFICATIONS

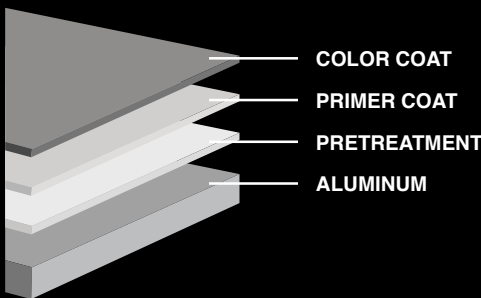
Alcotex is coil coated with a polyvinylidene fluoride (PVdF) coating containing a minimum of 70% KYNAR 500®/HYLAR 5000® resins which meets or exceeds AAMA 2605 and AAMA 620 performance requirements.

PROPERTIES	TEST METHOD	PERFORMANCE
Dry Film Thickness	ASTM D1400	0.20 mil primer coat 0.80 mil color coat 0.50 mil clear coat (3 coat system)
Specular Gloss @ 60°	ASTM D523	25 - 35
Pencil Hardness	ASTM D3363	HB Minimum
Flexibility T-bend	ASTM D4145	0-2T bend; No pick-off
Adhesion	ASTM D3359	No adhesion loss
Reverse Impact	ASTM D2794	No cracking or loss of adhesion
Acid Resistance		
10% Muriatic Acid (15 minutes)	ASTM D1308	No effect
20% Sulfuric Acid (15 minutes)	ASTM D1308	No effect
Acid Rain Test	Kesternich SO-2, DIN 50018	15 cycles minimum No objectionable color change
Alkali Resistance		
10%, 25% NaOH (1 hour)	ASTM D1308	No effect
Humidity Resistance		
100% R.H. @ 100°F	ASTM D2247	Passes 4,000 hours
Salt Spray Resistance		
5% Salt Fog @ 95°F	ASTM B117	Passes 4,000 hours
Color Retention		
10 years @ 45°, South Florida	ASTM D2244	Maximum 5 fade
Chalk Resistance		
10 years @ 45°, South Florida	ASTM D4214	Maximum 8 chalk

- ▶ ASTM: American Society for Testing and Materials
- ▶ Kynar 500 is a registered trademark of Arkema Inc.
- ▶ Hylar 5000 is a registered trademark of Solvay Plastics

2 COAT (SOLID & MICA COLORS)

Both of these 2 coat finishes will typically consist of a 0.2 mil primer coat and a 0.8 mil color coat for a nominal dry film thickness of 1.0 mil.



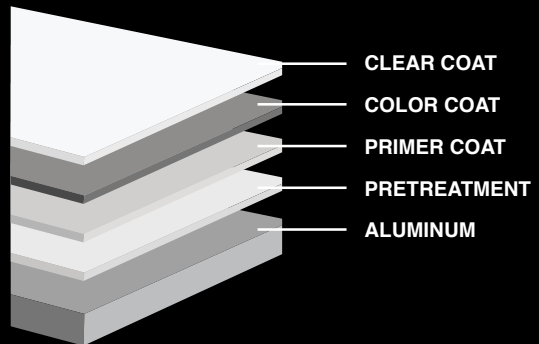
SRI / LRV

Solar Reflectance Index (SRI) numbers indicate how well the material reflects back instead of absorbing radiant energy and how well it radiates absorbed heat back into the environment.

Light Reflectance Value (LRV) numbers indicate the percentage of visible light reflected by the surface.

3 COAT (METALLIC COLORS)

These 3 coat finishes will typically consist of a 0.2 mil primer coat, 0.8 mil color coat and a 0.5 mil clear coat for a nominal dry film thickness of 1.5 mil.



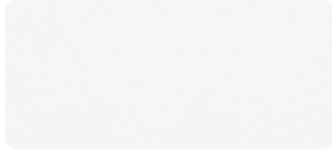
DIMENSIONS

Thickness: 4mm standard with 3mm & 6mm also available.

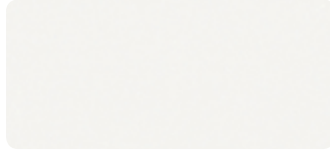
Width: 40", 49" & 62". Check with your local Alcotex representative for availability.

Length: No limit. Within 196" is recommended for convenient handling and delivery.

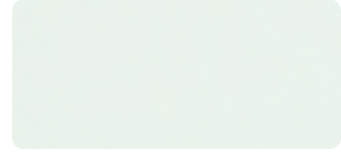
SOLID FINISHES



DM 1101 PURE WHITE
LRV: 69.6 SRI: 70



DM 1102 YELLOW WHITE
LRV: 74.7 SRI: 80



DM 1103 BLUE WHITE
LRV: 65.9 SRI: 74



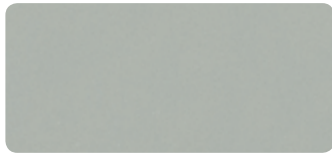
DM 1104 IVORY
LRV: 69.7 SRI: 74



DM 1105 LIGHT GREY
LRV: 34.2 SRI: 25



DM 1106 SILVER GREY
LRV: 27.6 SRI: 15



DM 1107 MOUSE GREY
LRV: 16.1 SRI: 6



DM 1108 DARK GREY
LRV: 9.4 SRI: 0



DM 1109 RUBY RED
LRV: 9.1 SRI: 17



DM 1110 PURE ORANGE
LRV: 20 SRI: 46



DM 1111 SIGNAL BLUE
LRV: 9 SRI: 9



DM 1112 EMERALD GREEN
LRV: 12.8 SRI: 12



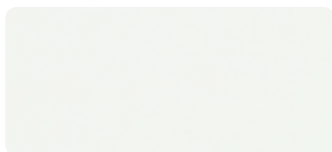
DM 1113 PINE GREEN
LRV: 7.5 SRI: 1



DM 1114 TRAFFIC RED
LRV: 14.9 SRI: 40



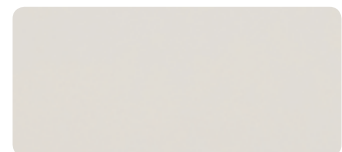
DM 1116 CREAM WHITE
LRV: 58.3 SRI: 59



DM 1117 ASCOT WHITE
LRV: 53.5 SRI: 49



DM 1118 HORIGON BLUE
LRV: 6.7 SRI: 2



DM 1119 RAW GREY
LRV: 52.1 SRI: 52

Disclaimer: Colors shown on this chart may differ slightly from PVdF colors when applied to aluminum.

In order to attain color consistency, all Mica or Metallic colors need to originate from the same color batch and have to be installed in the same direction.

SOLID FINISHES



DM 1120 BLACK
LRV: 3.8 SRI: 0



DM 1121 LIME YELLOW
LRV: 52 SRI: 60

MICA FINISHES



DM 1201 SILVER
LRV: 49.1 SRI: 56



DM 1202 BRIGHT SILVER
LRV: 51.9 SRI: 47



DM 1203 CHAMPAGNE
LRV: 47.5 SRI: 46



DM 1204 GOLD
LRV: 34.5 SRI: 36



DM 1205 WINE RED
LRV: 19.3 SRI: 42



DM 1206 JADE
LRV: 33.7 SRI: 38



DM 1207 COPPER PENNY
LRV: 27.2 SRI: 36



DM 1208 DARK CHAMPAGNE
LRV: 28.3 SRI: 24

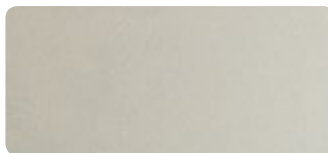


DM 1209 MEDIUM BRONZE
LRV: 30.6 SRI: 25

METALLIC FINISHES



DM 1301 METALLIC BRIGHT SILVER
LRV: 52.3 SRI: 60



DM 1302 METALLIC CHAMPAGNE
LRV: 56.7 SRI: 62



DM 1303 METALLIC MEDIUM GREY
LRV: 22.2 SRI: 13

Disclaimer: Colors shown on this chart may differ slightly from PVdF colors when applied to aluminum.

In order to attain color consistency, all Mica or Metallic colors need to originate from the same color batch and have to be installed in the same direction.

WOODGRAIN FINISHES



DM 0500 WALNUT
LRV: N/A SRI: N/A



DM 0501 MAHOGANY
LRV: N/A SRI: N/A

CUSTOM COLORS

Matching a color or producing a custom color is one of our specialties. Small batch quantities, fast turnaround and no hidden charges make this a great option.

SPECIALTY FINISHES

A wide range of PVdF coil coated woodgrain, zinc, brushed and corten patterns are also available. All of the specialty finishes offer the benefits of larger sheet sizes, affordability and short lead times. Please consult your local representative for additional information.

WARRANTY

All Alcotex coatings are backed by a comprehensive finish warranty. Please contact your local Alcotex representative for further details.



SAMPLES OR QUESTIONS?

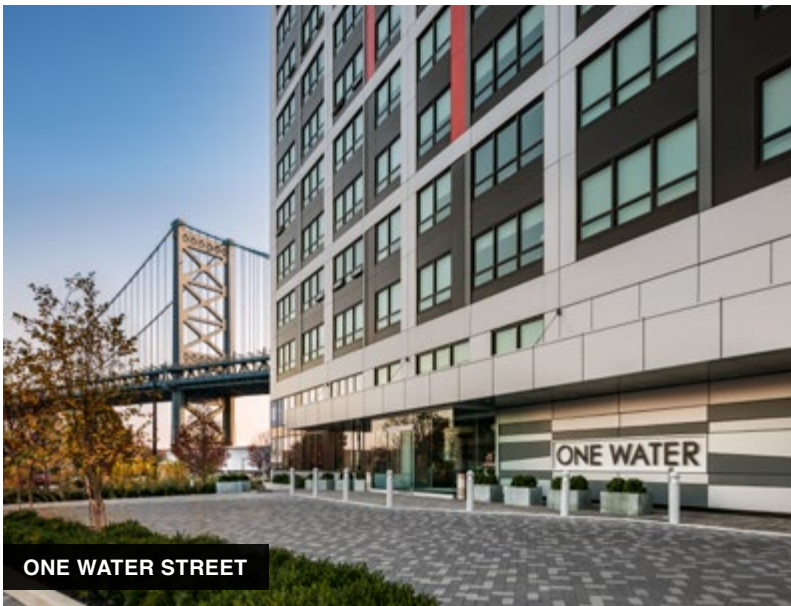
Please call us directly at **877-252-6839** or email us at **sales@alcotex.com** to receive samples of any of the colors shown or to get answers to any questions that you may have.

Disclaimer: Colors shown on this chart may differ slightly from PVdF colors when applied to aluminum.

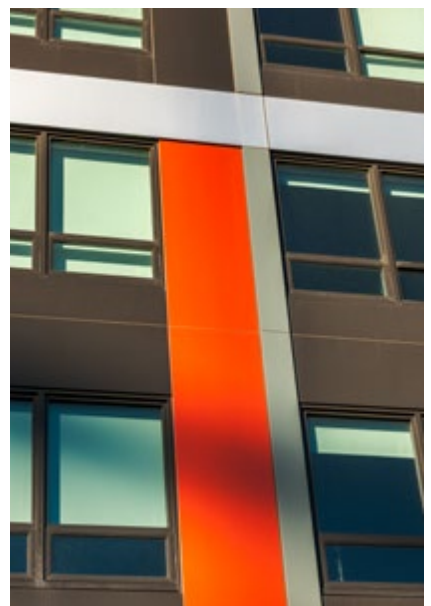
In order to attain color consistency, all Mica or Metallic colors need to originate from the same color batch and have to be installed in the same direction.



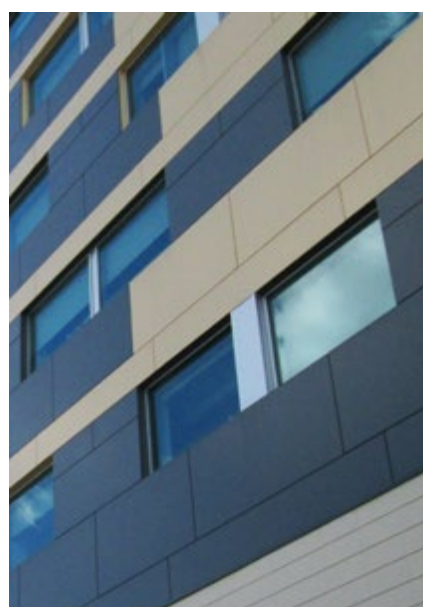
CALGARY AIRPORT

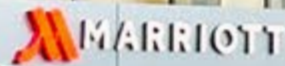


ONE WATER STREET



ST. JOSEPH'S HOSPITAL





ALCOTEX

PHONE: 1.877.ALCOTEX (252.6839)

EMAIL: SALES@ALCOTEX.COM

FAX: 1.877.252.6838